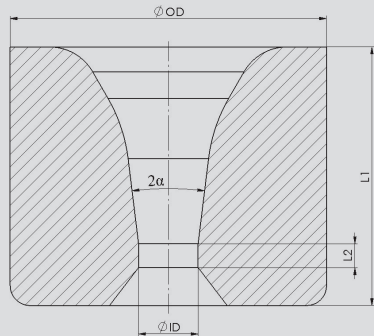


Hartmetall-Ziehstein-Kernrohlinge Ausführung: Ø 16 x 13, 14°

Cemented tungsten carbide nibs Type: Ø 16 x 13, 14°



L1 = Länge Kern / Length nib (mm)

L2 = Länge Zylinder / Length Cylinder (mm)

Ø OD = Außendurchmesser / Outer diameter (mm)

Ø ID = Innendurchmesser / Inner diameter (mm)

2α = Ziehwinkel / Drawing angle

Toleranz / Tolerance: + 0,01

Toleranz / Tolerance: - 0,03

Toleranz / Tolerance: +/- 1°

- Alle Bender Lagerkerne sind bereits im Außendurchmesser geschliffen! / All carbide nibs are ground outside
- Sonderformen und Geometrien nach Kundenwunsch möglich / Special forms and geometries are available on customer's request
- Alle Ziehsteinkerne sind kurzfristig ab Lager lieferbar / All nibs are available from stock

Artikel-Nr. / Article-No.	Ø ID	2α	L2	Ø OD	L1	Qualität / Quality	CobaH
BK160260G14	2,60	14°	1,20	16	13	K10F	6%
BK160270G14	2,70	14°	1,20	16	13	K10F	6%
BK160280G14	2,80	14°	1,20	16	13	K10F	6%
BK160290G14	2,90	14°	1,30	16	13	K10F	6%
BK160300G14	3,00	14°	1,30	16	13	K10F	6%
BK160310G14	3,10	14°	1,30	16	13	K10F	6%
BK160320G14	3,20	14°	1,30	16	13	K10F	6%
BK160330G14	3,30	14°	1,40	16	13	K10F	6%
BK160340G14	3,40	14°	1,40	16	13	K10F	6%
BK160350G14	3,50	14°	1,40	16	13	K10F	6%
BK160360G14	3,60	14°	1,40	16	13	K10F	6%
BK160370G14	3,70	14°	1,50	16	13	K10F	6%
BK160380G14	3,80	14°	1,50	16	13	K10F	6%
BK160390G14	3,90	14°	1,50	16	13	K10F	6%
BK160400G14	4,00	14°	1,50	16	13	K10F	6%
BK160410G14	4,10	14°	1,50	16	13	K10F	6%
BK160420G14	4,20	14°	1,60	16	13	K10F	6%
BK160430G14	4,30	14°	1,60	16	13	K10F	6%
BK160440G14	4,40	14°	1,60	16	13	K10F	6%
BK160450G14	4,50	14°	1,60	16	13	K10F	6%
BK160460G14	4,60	14°	1,70	16	13	K10F	6%
BK160470G14	4,70	14°	1,70	16	13	K10F	6%
BK160480G14	4,80	14°	1,70	16	13	K10F	6%
BK160490G14	4,90	14°	1,70	16	13	K10F	6%
BK160500G14	5,00	14°	1,80	16	13	K10F	6%
BK160510G14	5,10	14°	1,80	16	13	K10F	6%
BK160520G14	5,20	14°	1,80	16	13	K10F	6%
BK160530G14	5,30	14°	1,80	16	13	K10F	6%
BK160540G14	5,40	14°	1,90	16	13	K10F	6%
BK160550G14	5,50	14°	1,90	16	13	K10F	6%
BK160560G14	5,60	14°	1,90	16	13	K10F	6%
BK160580G14	5,80	14°	1,90	16	13	K10F	6%